

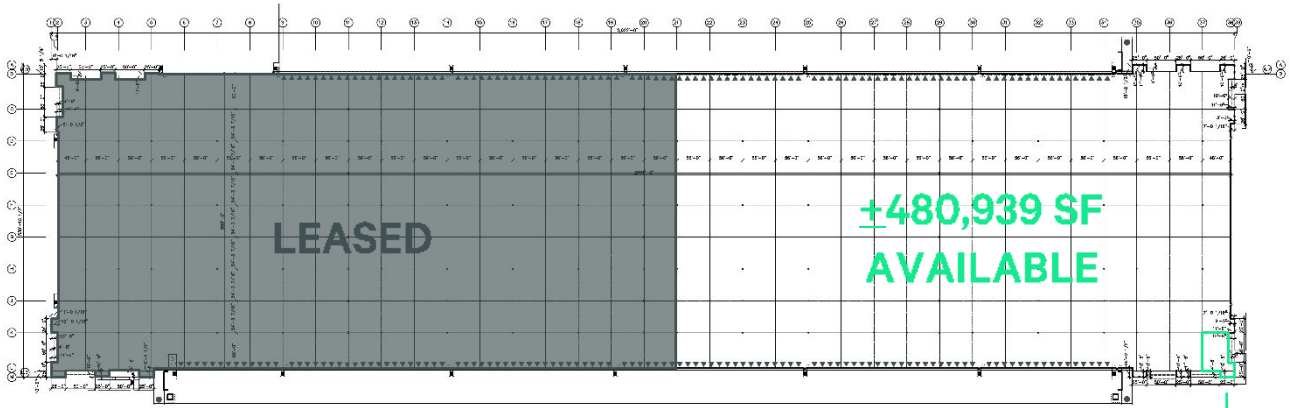
<http://www.cbreim.com/logistics>

# Centerstate Logistics Park

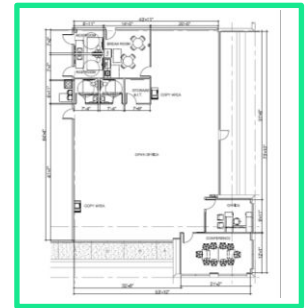
**+480,939 SF**8565 State Road 33  
Lakeland, FL 33809**Total Available** ±480,939 SF**Office Space** ±3,318 SF**Site Size** ±164.85 acres**Frontage** ±5,100 on I-4**Building Dimensions** 2,000' (W) x 500' (D)**Column Spacing** 56' (W) x 54'3" (D), 60' speed bay**Clear Height** 40'**Truck Court Depth** 190'**Loading Type** Cross-dock**Dock-High Doors** 106**Drive-In Doors** 2**Power** 6,400a, 480/277v, 3p**Year Built** 2021**Sprinklers** Fully sprinklered (ESFR)**Trailer Parking** 142 spaces**Car Parking** 253 surface parking spaces  
(expandable)**Construction** Concrete tilt-wall**Slab Design** Slab on grade, 7", 4,000 psi**Zoning** PUD Industrial, City of Lakeland**Windows** Clerestory north and south elevations**Roof** White 60 mil TPO membrane over R-20 rigid insulation**Warehouse Lighting** LED

8565 State Road 33  
Lakeland, FL 33809

For Lease



- ▼ Dock-High Door
- Drive-In Door



## Contact us

### LEASED BY:

JLL

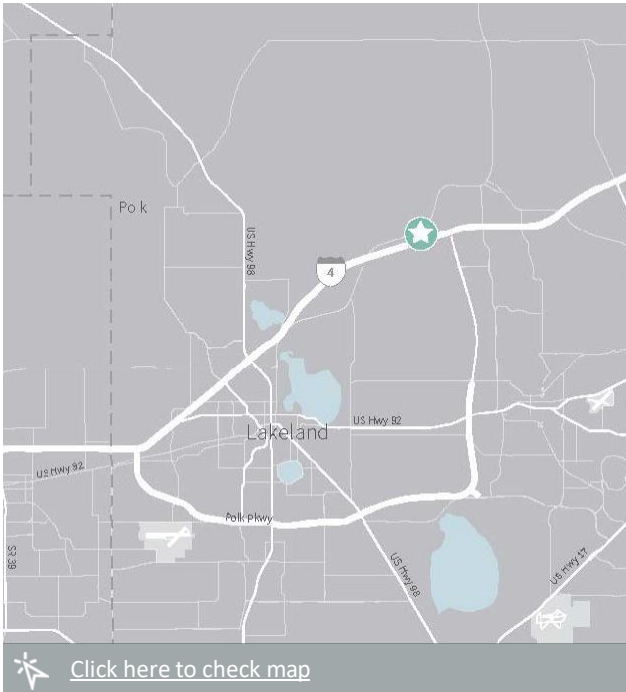
**John C. Dunphy, CCIM, SIOR**  
Executive Managing Director  
+1 813 387 1312  
[johnc.dunphy@jll.com](mailto:johnc.dunphy@jll.com)

**Bobby Isola, CCIM, SIOR**  
Executive Managing Director  
+1 407 930 1804  
[bobby.isola@jll.com](mailto:bobby.isola@jll.com)

### OPERATED BY:

**CBRE Investment Management**

**Benjamin Hoog**  
Asset Manager  
+1 314 435 4217  
[benjamin.hoog@cbreim.com](mailto:benjamin.hoog@cbreim.com)



© 2024 CBRE, Inc. All rights reserved. This information has been obtained from sources believed reliable but has not been verified for accuracy or completeness. You should conduct a careful, independent investigation of the property and verify all information. Any reliance on this information is solely at your own risk. CBRE and the CBRE logo are service marks of CBRE, Inc. All other marks displayed on this document are the property of their respective owners, and the use of such logos does not imply any affiliation with or endorsement of CBRE. Photos herein are the property of their respective owners. Use of these images without the express written consent of the owner is prohibited.