



Click or scan
for video

1040 S Parkway Frontage Rd

Lakeland, FL 33813

50,000 SF For Lease
2 full floors available

Ron Ruffner
813.387.1325
ron.ruffner@jll.com

Clay Sovich
813.387.1318
clay.sovich@jll.com



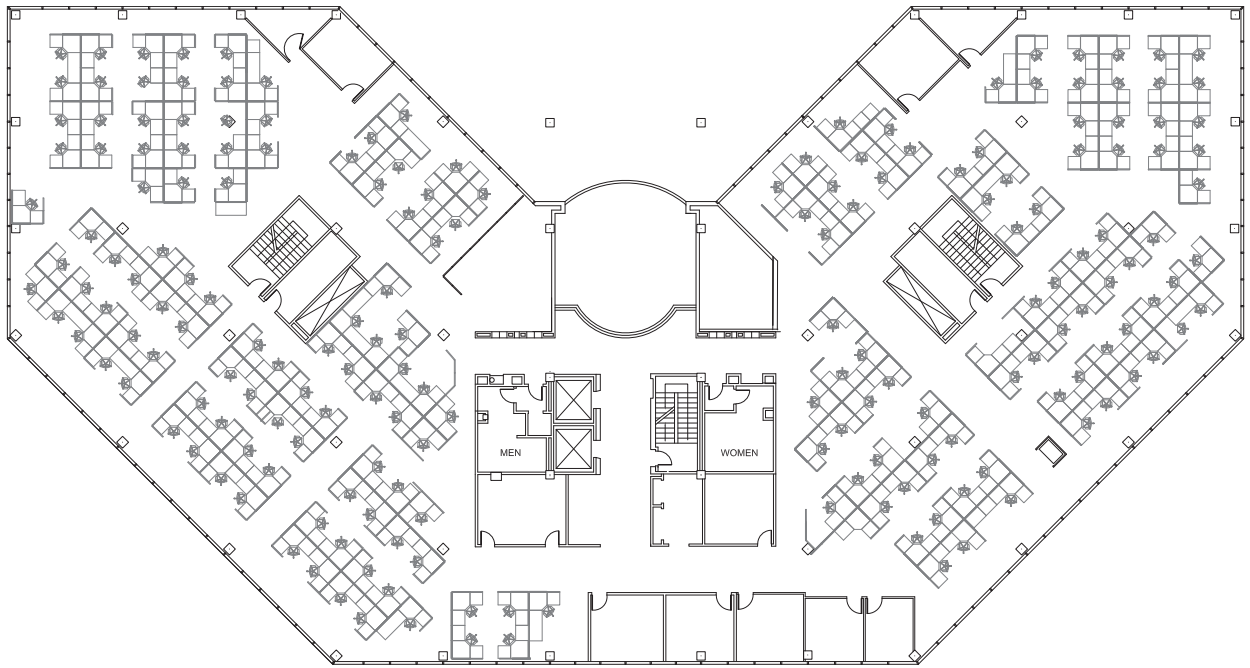


- | Two 25,000 RSF floors available
- | 6.9 per 1,000 SF parking ratio
- | Option to include furniture
- | 24/7 secure access
- | Three-story office built in 1990
- | Impeccably maintained building and grounds
- | Currently leased to single tenant (to remain on Floor 1)
- | 7.44 acre site

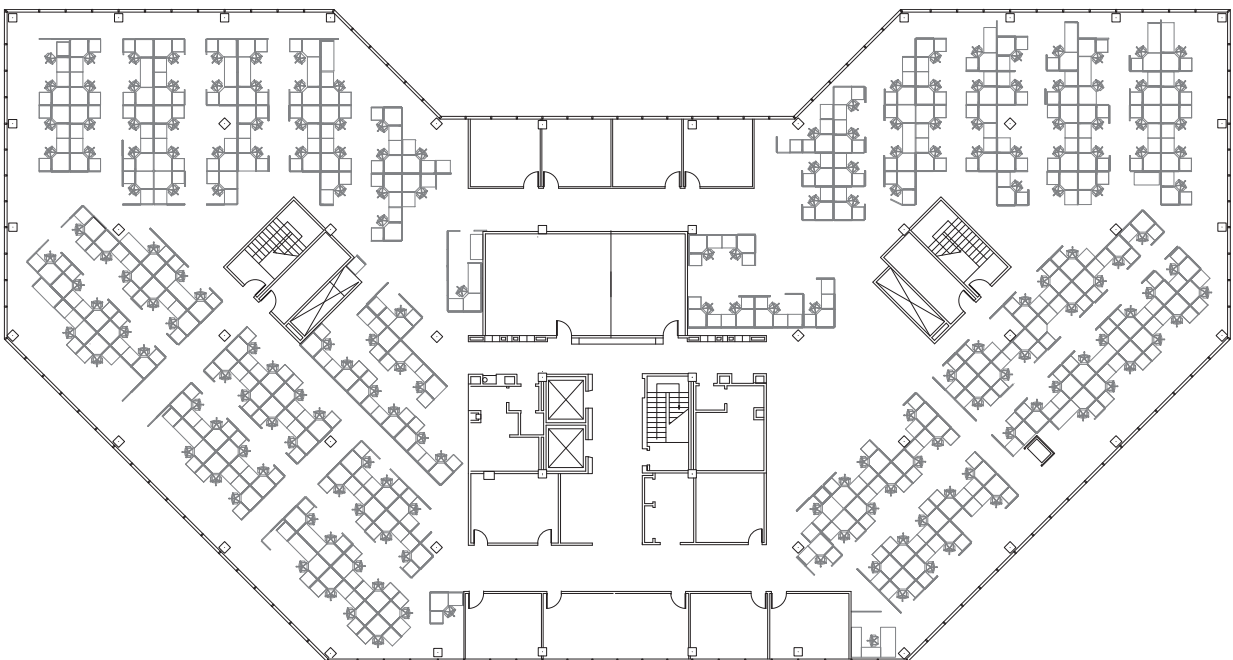




Floor
2

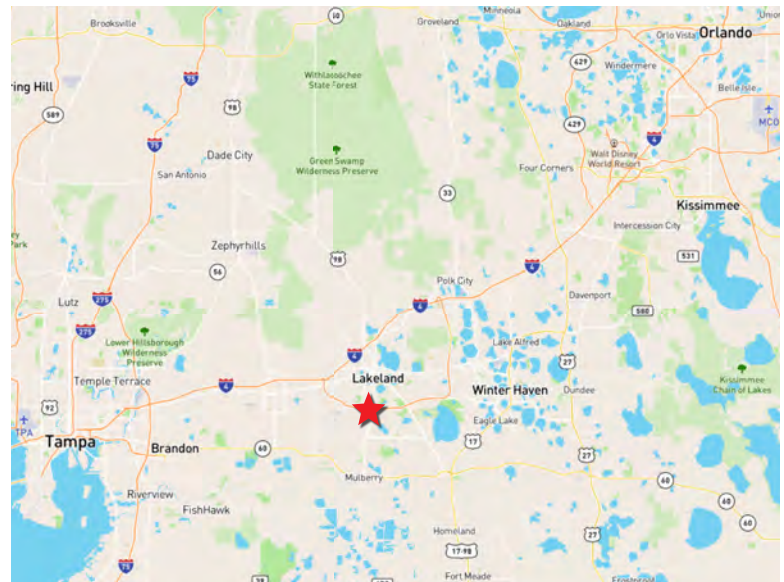
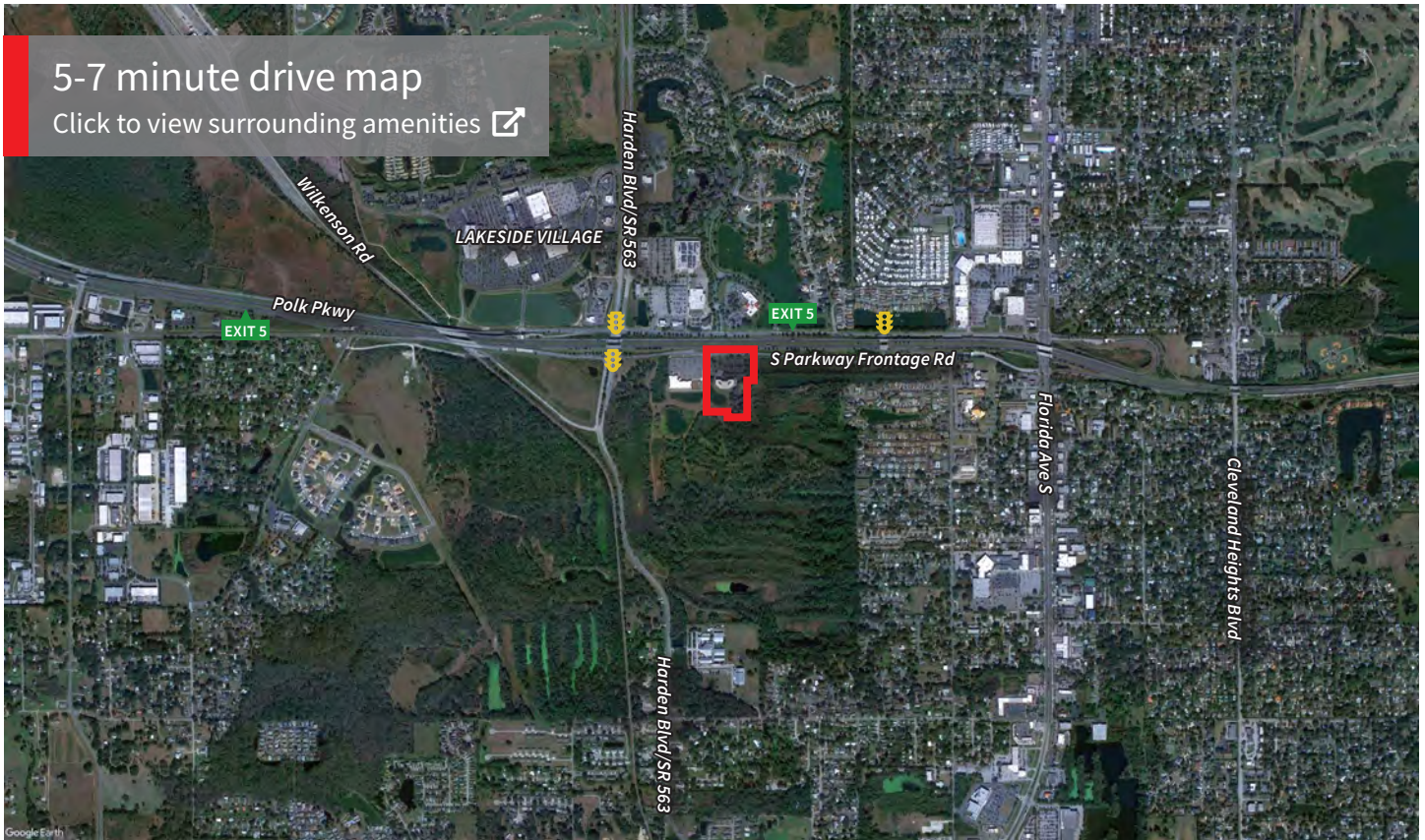


Floor
3



5-7 minute drive map

Click to view surrounding amenities [↗](#)



Although information has been obtained from sources deemed reliable, JLL does not make any guarantees, warranties or representations, express or implied, as to the completeness or accuracy as to the information contained herein. Any projections, opinions, assumptions or estimates used are for example only. There may be differences between projected and actual results, and those differences may be material. JLL does not accept any liability for any loss or damage suffered by any party resulting from reliance on this information. If the recipient of this information has signed a confidentiality agreement with JLL regarding this matter, this information is subject to the terms of that agreement. ©2021. Jones Lang LaSalle IP, Inc. All rights reserved.