

1014 South Florida Avenue



FOR LEASE

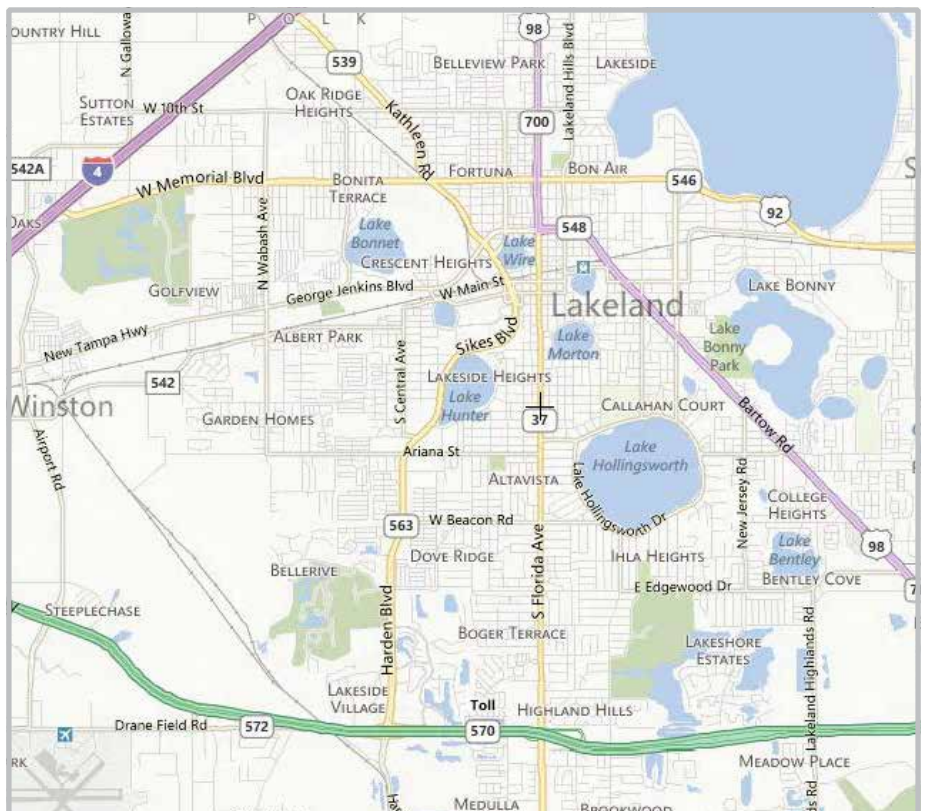
Price
\$14.99 NNN

Location
1014 South Florida Avenue
Lakeland, FL 33803

Building Size
5,488 +/- SF

Net Leasable Size
3,700 +/- SF

Parking
17 +/- Spaces



Lakeland,FL
OFFICE



Additional
Details

Land Size
0.31 +/- Acres

Year Built
2003

Zoning
C-2 Commercial

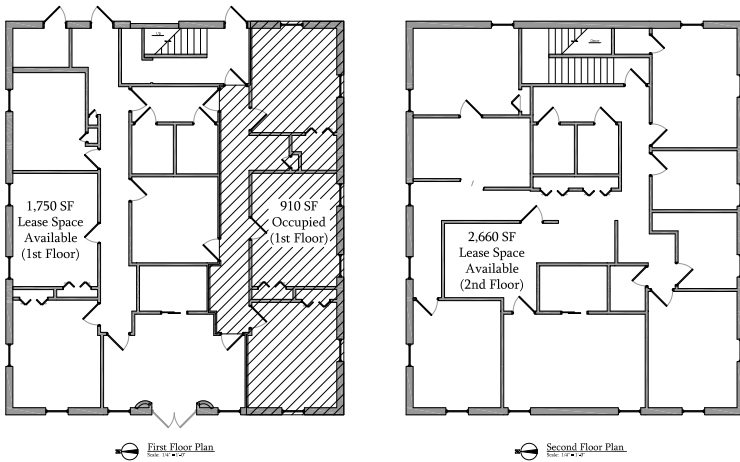
Taxes (2012)
\$10,868.41

Utilities
Lakeland Electric



1014 South Florida Avenue

Floor Plans



Demographic Data

	1 Mile	2 Miles	3 Miles
Population	10,931	36,407	71,133
Households	4,700	15,520	28,697
Median HH Income	\$34,415	\$35,384	\$35,813

Property Features

This recently-built professional office building features significant exposure on South Florida Avenue, a high-traffic corridor in Lakeland. It sits in the Dixieland Historic District with shops, restaurants and banks nearby.



1014 South Florida Avenue



Kyle Vreeland
863.877.2838 Direct
Kyle@SRDcommercial.com

Greg Smith
863.648.1528 Direct
Greg@SRDcommercial.com

Scan Below



or visit
SRDcommercial.com

Contact



114 N. Tennessee Ave.
3rd Floor
Lakeland, FL 33801
863.648.1528
SRDcommercial.com