

# West Lakeland Business Park

2525 Drane Field Road | Lakeland, FL 33811

FOR LEASE



SAUNDERS RALSTON DANTZLER

**Brian Durden**

**863-877-2829**

[BDurden@SRDcommercial.com](mailto:BDurden@SRDcommercial.com)

**Gary Ralston, CCIM**

**863-877-2828**

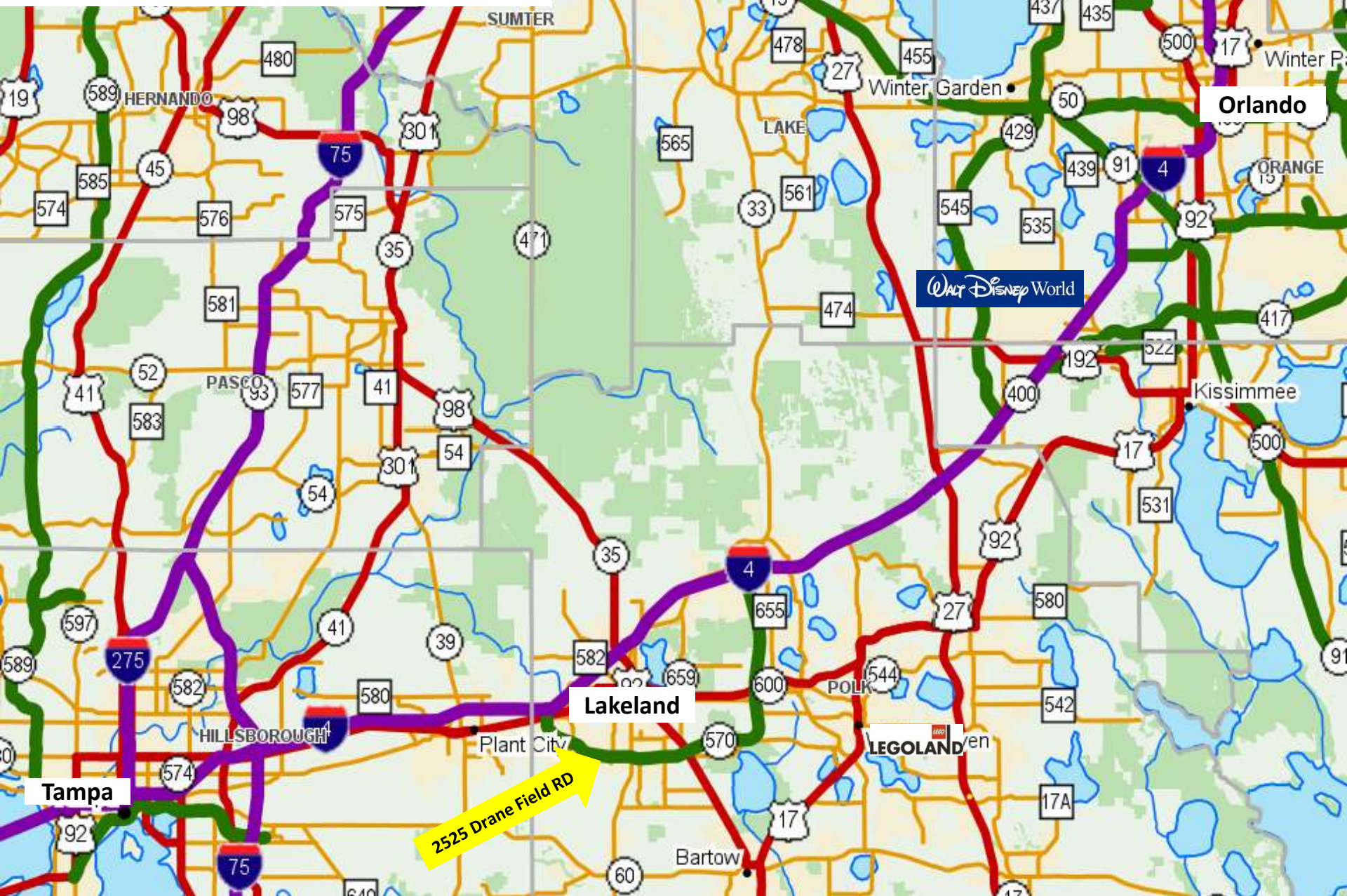
[Gary@SRDcommercial.com](mailto:Gary@SRDcommercial.com)

# West Lakeland Business Park

- 4,000 +/- SF to 16,000 +/- SF available ... plus 20,000 +/- SF build-to-suit
- Within 30 minutes of Tampa and 45 minutes of Orlando
- Less than 5 minutes to:
  - Lakeland Linder Regional Airport
  - Publix Corporate Headquarters
- \$11/SF Modified Gross

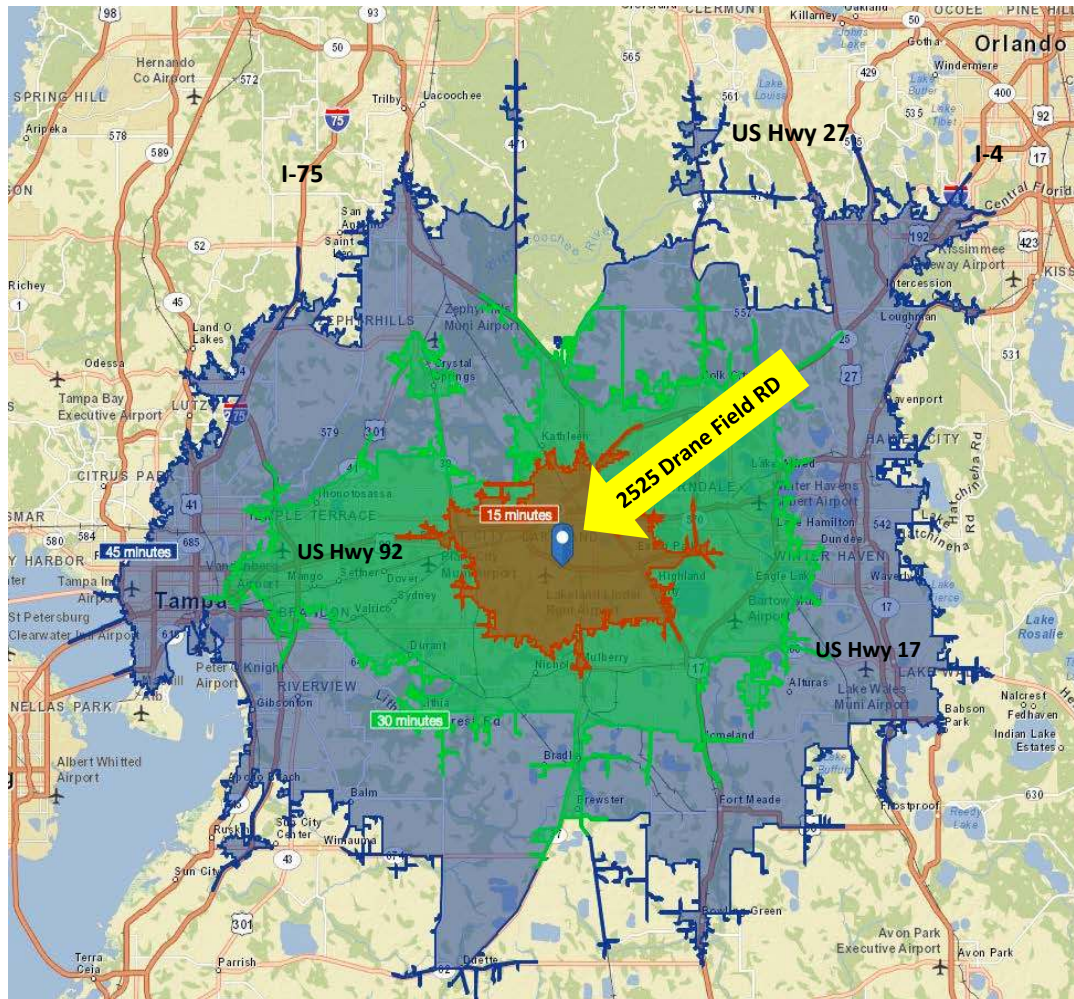


# Regional Location Map





# 15, 30, 45 Minute Drive Times



Drive Times	15 min.	30 min.	45 min.
<b>Population</b>	<b>212,836</b>	<b>636,135</b>	<b>1,694,630</b>
<b>Households</b>	<b>80,444</b>	<b>233,883</b>	<b>642,463</b>
<b>Median Age</b>	<b>38.5</b>	<b>38.8</b>	<b>37.6</b>
<b>Median Household Income</b>	<b>\$45,278</b>	<b>\$46,146</b>	<b>\$46,298</b>
<b>Average Household Income</b>	<b>\$61,194</b>	<b>\$59,940</b>	<b>\$63,176</b>
<b>Per Capita Income</b>	<b>\$23,292</b>	<b>\$22,227</b>	<b>\$24,170</b>

# Close to Publix Supermarkets Headquarters and Lakeland Regional Airport



**Within 30 Minutes of Tampa and 45 Minutes of Orlando**

# Neighborhood Aerial



8,700 cars/day

**Publix**  
Headquarters

26,000 cars/day

**Subject**

11,200 cars/day

**Hilton**

**FlyLakeland**  
Lakeland Linder Regional Airport

*Grasslands*  
Golf and Country Club

33,000 cars/day

**Hampton Inn**

**Residence Inn**  
Marriott

**Lakeside**  
V.I.L.L.A.G.E

**COURTYARD**  
Marriott

18,200 cars/day

# **Publix** Corporate Headquarters

3300 Publix Corporate Parkway, Lakeland, FL 33811



- **320,000 SF headquarters office building**
  - **Over 2,000 employees**

## **Departments include:**

- **Benefits**
- **Corporate Purchasing**
- **Facilities**
- **Finance**
- **Human Resources**
- **Information Technology**
- **Legal & Risk Management**
- **Loss Prevention**
- **Marketing**
- **Public Affairs**
- **Real Estate**
- **Strategy Support**



# Fly Lakeland

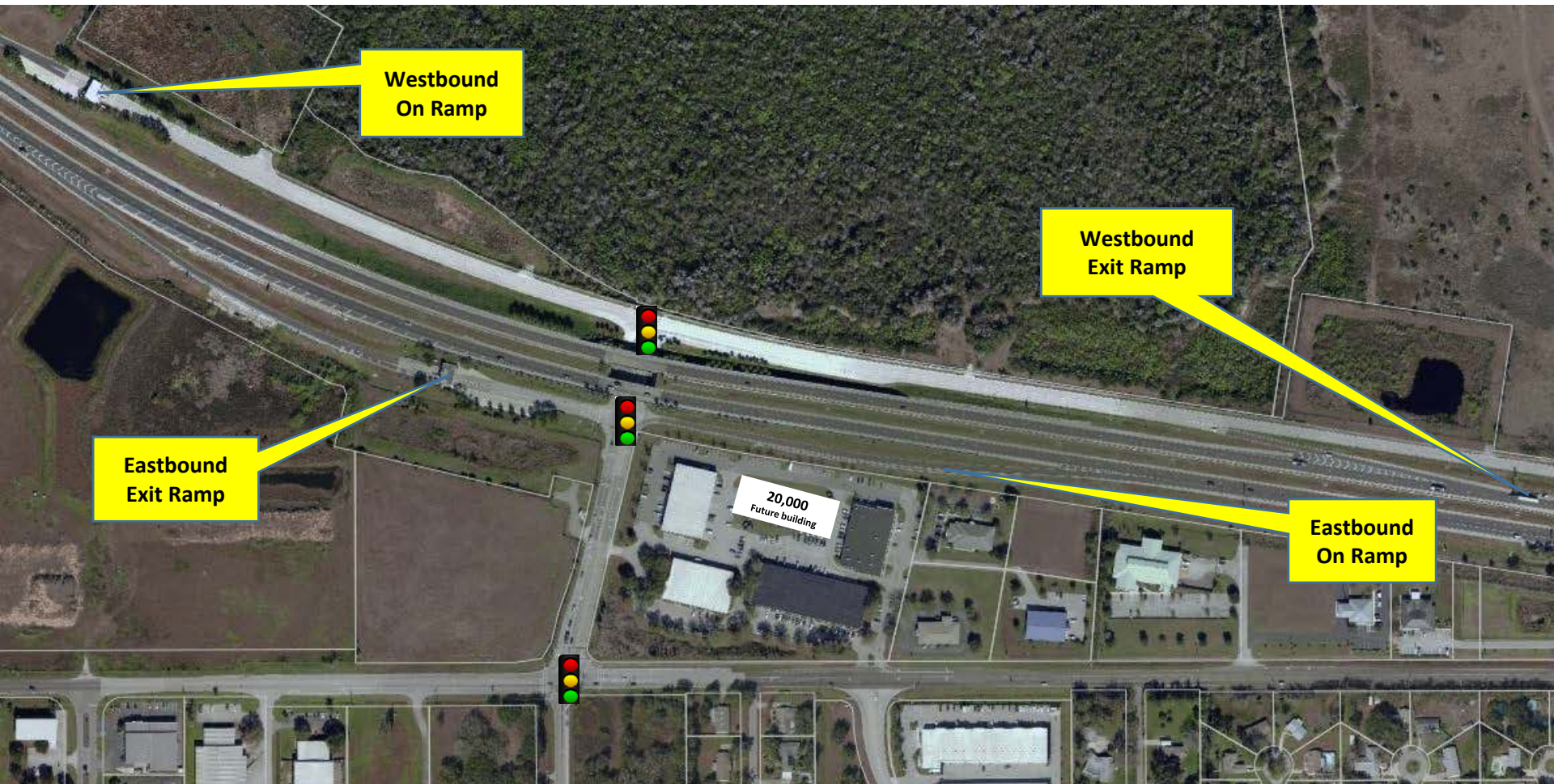
Lakeland Linder Regional Airport



**Situated in the heart of Florida along the I-4 corridor Lakeland Linder Airport is midway between Tampa and Orlando, with easy access to I-4 via the Polk Parkway. The Lakeland Airport is owned and operated by the City of Lakeland.**

- **1,700 Acres**
- **1 Million square feet of facilities**
- **8,500 foot runway**
- **More than 100,000 Aircraft Operations a year**
- **Over 215 Based Aircraft**
- **Sun 'n Fun Fly-In [www.sun-n-fun.org](http://www.sun-n-fun.org)**
- **Central Florida Aerospace Academy and Polk State College Aerospace**
- **FAA Part 139 Certificated Airport**
- **Aircraft Rescue Firefighting (ARFF) Index B Services, Index C Services available on Request**

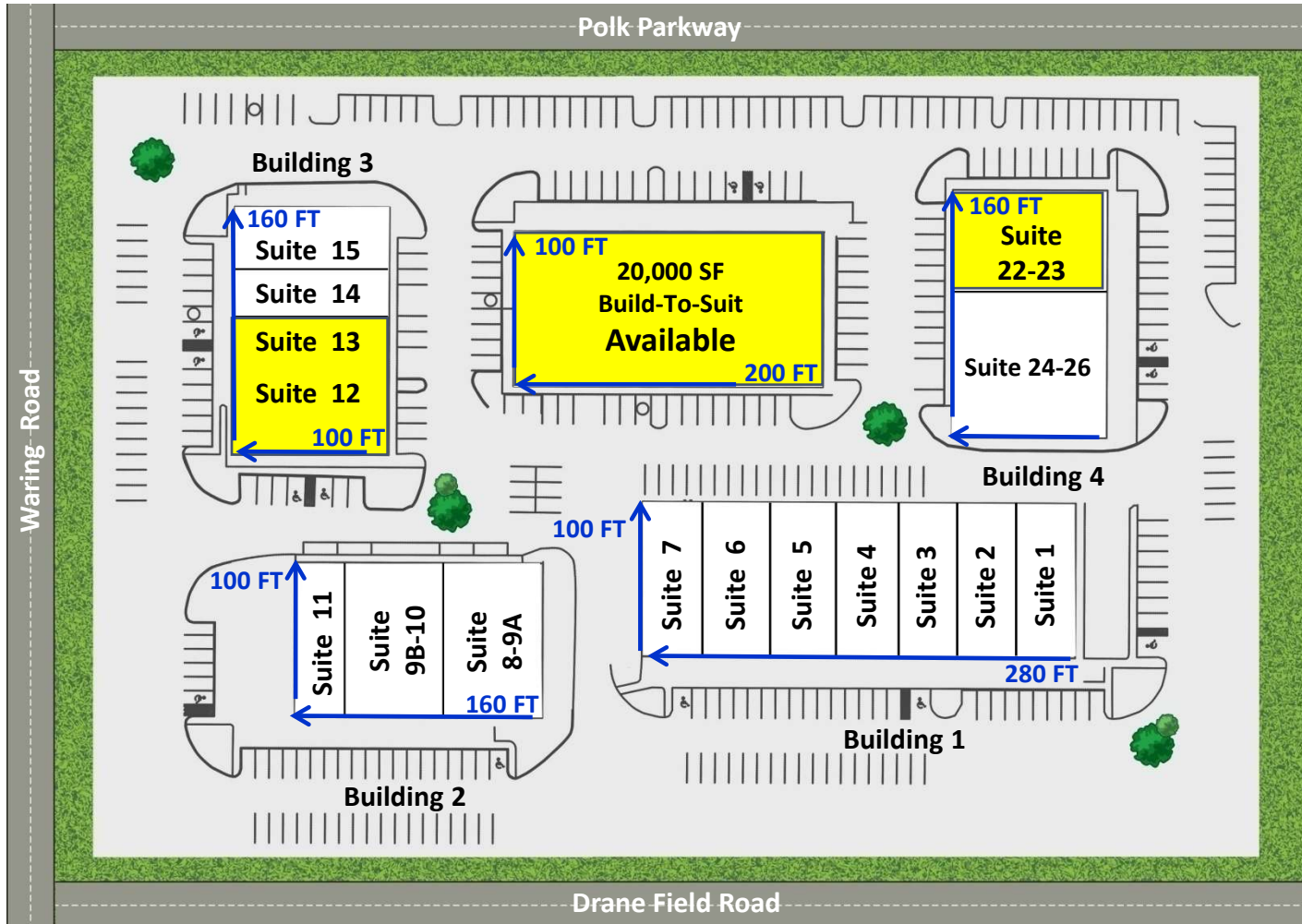
# 2525 Drane Field Road Polk Parkway Full Interchange



Full access – east and west to Polk Parkway

Suite 1-2	Tri-Venture	8,000 +/- SF
Suite 3	Terminix	4,000 +/- SF
Suite 4	Compassionate Care	3,265 +/- SF
Suite 5-7	Civil Surv	12,000 +/- SF
Suite 8-9A	Franwell	6,000 +/- SF
Suite 9B-10	Nickerson Business	6,000 +/- SF
Suite 11	Risse Brothers	4,000 +/- SF

Suite 12-13	Available 1/1/16	8,000 +/- SF
Suite 14	LifeSavers	2,500 +/- SF
Suite 15	American Directions	5,500 +/- SF
Suite 22-23	Available	5,500 +/- SF
Suite 24-26	SYKES	10,500 +/- SF
Build-To-Suit	Available	20,000 +/- SF



# Suite 12 & 13 – 8,000 +/- SF Available!



# West Lakeland Business Park



©2016 Coldwell Banker Real Estate LLC, dba Coldwell Banker Commercial Affiliates. All Rights Reserved. Coldwell Banker Real Estate LLC, dba Coldwell Banker Commercial Affiliates fully supports the principles of the Equal Opportunity Act. Each Office is Independently Owned and Operated. Coldwell Banker Commercial and the Coldwell Banker Commercial Logo are registered service marks owned by Coldwell Banker Real Estate LLC, dba Coldwell Banker Commercial Affiliates. ©2016 Coldwell Banker Commercial Saunders Ralston Dantzler Realty, LLC, All rights Reserved, makes every attempt to provide accurate information on this property, however, does not guarantee the accuracy. Buyer should rely entirely on their own research, inspection of property, and records.